

Alton Canoe Club Float Plan Briefing Sheet Pack

Index to accompanying Float Plans



The following Float Plans provide location specific information regarding each of our club activity sessions

Session Venue	Briefing Sheet Reference
Eastney Point	ACC1
River Wey, Pyrford	ACC2
Basingstoke Canal, Water Witch, Odiham	ACC3
River Wey, Millmead, Britania Pub, Guildford	ACC4
Inn on the Beach (Hayling Beach)	ACC5
Bracklesham Bay	ACC6
Basingstoke Canal, Barley Mow, Winchfield Green	ACC7
Broadmarsh Coastal Park	ACC8
Pulborough, River Arun	ACC9
River Wey, Guildford Viaduct, Guildford	ACC10
The Ship Inn, Hayling Island Bridge	ACC11
Basingstoke Canal, Crookham Wharf	ACC12
West Itchenor	ACC13
Basingstoke Canal, Ash Vale	ACC14
Chichester Canal, Chichester	ACC15
Stopham Bridge, River Arun	ACC16
River Wey, Farncombe	ACC17
Portsmouth, Round Tower	ACC18

Float Plan Briefing Sheet ACC2

ALTON CANOE CLUB

Session Venue River Wey, Pyrford
Timeframe 18.45 to approx. 20.30



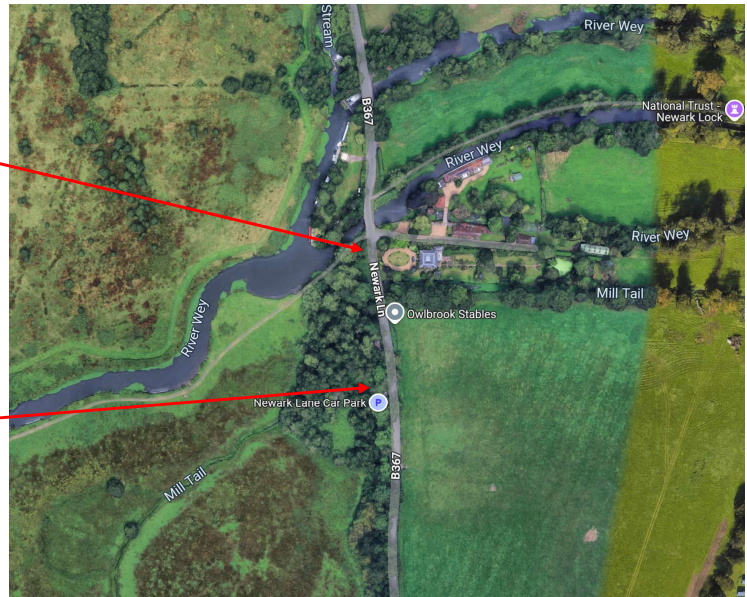
Brief description of the paddling session and its location

"River Wey, Pyrford": Newark Lane Car Park, Ripley, Woking GU23 7ES
What3words: <https://w3w.co/unfair.pools.scores>
Google Maps: <https://maps.app.goo.gl/npZ3sHTgyjKYX1Lv9>
Distinguishing feature of location: Travelling north along Newark Lane, car park is on the left hand side, approx 100m before the road bridge over the River Wey.
Note: The entrance is well hidden and the road very busy.

Location Map:

Access/Egress Point

Car Parking



Description of session To paddle a section of the River Wey Navigation, either south west towards Papercourt Lock, or north east towards Pyrford Green. The location is subject to river flow from south west to north east. We may also explore one of the side channels.

Contingency Notes Calm water and gentle flows would be expected but will be weather/rainfall dependent. The tow path runs adjacent to the river, generally to the south side. Access from the water to this tow path is available at intervals along the route. **Craft to be walked from end of car park along a narrow pavement adjacent to busy road. Care must be taken. Please note, there is a height restriction bar to this car park (approx 1.8m).**

Activity Risks River flow will move paddlers down river. Potential danger of entrapment in overhanging trees. River locks have adjacent over-flow streams/weirs and should be avoided. Other water users (kayak/paddleboard etc). Locks to be portaged.

Notes Please park considerately, do not block pathways/road and be mindful of other members of the public. River Wey permit is required for non Paddle UK members (<https://www.national-trust-tickets.org.uk/>). Paddle UK membership allows you access to this stretch of water.

Nearest Hospital (A&E) Royal Surrey County Hospital - 01483571122 Royal Surrey Hospital, Guildford GU2 7XX

The session will start with a briefing, prior to going afloat. Members must attend the briefing to ensure they know of any location-specific information that they should be aware of. If you do not attend the briefing, you will not be deemed to be a part of the evenings club activity.

Float Plan Briefing Sheet ACC3

ALTON CANOE CLUB

Session Venue Basingstoke Canal, Water Witch, Odiham

Timeframe 18.45 to approx. 20.30



Brief description of the paddling session and its location

"The Water Witch, Odiham";

What3words:

Google Maps:

Distinguishing feature of location:

Colt Hill, Odiham, Hook RG29 1AL

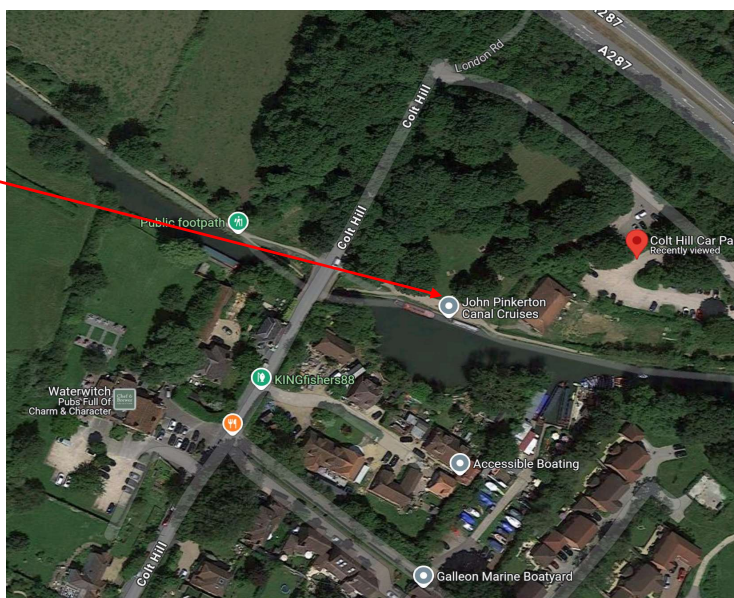
<https://w3w.co/cadet.leaves.delay>

<https://maps.app.goo.gl/vKd7fsNNKzdEXrQ37>

Passing the Waterwitch pub on your left, drive over the canal bridge and follow the lane round to the right.

Location Map:

Access/Egress Point



Description of session

To paddle a section of the Basingstoke Canal Navigation, either in an easterly or westerly direction.

Contingency Notes

Calm water and no flow would be expected but will be weather/rainfall dependent. The tow path runs adjacent to the canal, generally to the north side. Access from the water to this tow path is available at intervals along the route. Please note, there is a height restriction bar to this car park.

Activity Risks

Reeds and other vegetation along the bank-sides to be avoided. Canal traffic (narrow boats) may be passed. Other water users (kayak/paddleboard etc). Low lift-bridge to be negotiated.

Notes

Please park considerately, do not block pathways/road and be mindful of other members of the public. Basingstoke Canal permit is required for non Paddle UK members (<https://www.hants.gov.uk/thingstodo/basingstokecanal/onthewater/unpowered>). Paddle UK membership allows you access to this stretch of water.

Nearest Hospital (A&E)

Basingstoke and North Hants - 01256314700 Aldermaston Rd, Basingstoke RG24 9NA

The session will start with a briefing, prior to going afloat. Members must attend the briefing to ensure they know of any location-specific information that they should be aware of. If you do not attend the briefing, you will not be deemed to be a part of the evenings club activity.

Float Plan Briefing Sheet ACC4

ALTON CANOE CLUB

Session Venue River Wey, Millmead, Britania Pub, Guildford
Timeframe 18.45 to approx. 20.30



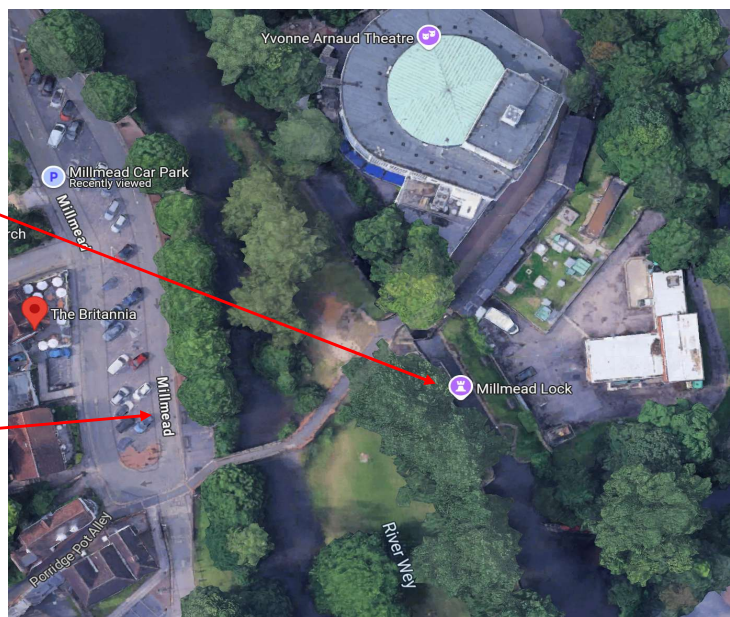
Brief description of the paddling session and its location

"River Wey, Pyrford": Millmead, Guildford GU2 4BE
What3words: <https://w3w.co/video.glass.again>
Google Maps: <https://maps.app.goo.gl/E49WsMY8ZpP9oUZq7>
Distinguishing feature of location: Parking in the Millmead car park adjacent to the Britania PH. River access/egress on far side of river (accessed via footbridge). Car parking payments required until 9pm

Location Map:

Access/Egress Point

Car Parking



Description of session To paddle a section of the River Wey Navigation, south towards St Catherines lock. The location is subject to river flow from south to north. We may also explore one of the side channels.

Contingency Notes Calm water and gentle flows would be expected but will be weather/rainfall dependent. The tow path runs adjacent to the river, generally to the west side. Access from the water to this tow path is available at intervals along the route. Please note, the Millmead car park is pay and display.

Activity Risks River flow will move paddlers down river. Potential danger of entrapment in overhanging trees. River locks have adjacent over-flow streams/weirs and should be avoided. Other water users (kayak/paddleboard etc). Narrow foot-bridge to carry kayaks across. Canal lock chamber to be avoided.

Notes Please park considerately, do not block pathways/road and be mindful of other members of the public. River Wey permit is required for non Paddle UK members (<https://www.national-trust-tickets.org.uk/>). Paddle UK membership allows you access to this stretch of water.

Nearest Hospital (A&E) Royal Surrey County Hospital - 01483571122 Royal Surrey Hospital, Guildford GU2 7XX

The session will start with a briefing, prior to going afloat. Members must attend the briefing to ensure they know of any location-specific information that they should be aware of. If you do not attend the briefing, you will not be deemed to be a part of the evenings club activity.

Float Plan Briefing Sheet ACC5

ALTON CANOE CLUB

Session Venue Inn on the Beach (Hayling Beach)

Timeframe 18.45 to approx. 20.30



Brief description of the paddling session and its location

"Hayling Beach":

Sea Front, Hayling Island PO11 0AS

What3words:

<https://w3w.co/covers.worth.bind>

Google Maps:

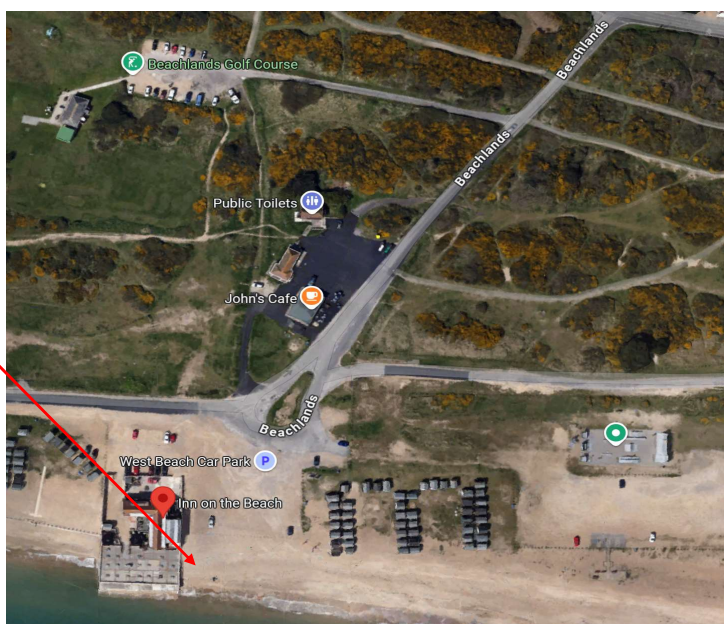
<https://maps.app.goo.gl/RkBF5Kze5bk8MmoX8>

Distinguishing feature of location:

Parking immediately adjacent to the Inn on the Beach PH.

Location Map:

Access/Egress Point



Description of session

To paddle parallel to the sea shore, either to the east or the west. The location is subject to tidal flows. The sea state will be affected by wind conditions and strength/direction of tidal flows.

Contingency Notes

Due to location on the seashore, there is a possibility that this session may be curtailed /cancelled at short notice if the weather conditions are deemed unsuitable. If conditions are considered suitable only for more competent paddlers, a Club Member with insufficient competence may be asked not to join others on the water. Please kindly respect the leader's decision in this regard. Access from the water to the beach is available along the route.

Activity Risks

High tide noted on club event calendar (Portsmouth High Water). Tide flows will likely cause paddlers to drift along the shoreline. Wind conditions may cause paddlers to drift. Wind/tide flow interactions can cause worsened sea state. Other water users (kayak/paddleboard/jet ski/ yacht/small commercial craft etc).

Notes

Please park considerately, do not block pathways/road and be mindful of other members of the public. No permits/licence required.

Nearest Hospital (A&E)

Queen Alexandra Hospital - 02392 286000

Cosham, Portsmouth PO6 3LY

The session will start with a briefing, prior to going afloat. Members must attend the briefing to ensure they know of any location-specific information that they should be aware of. If you do not attend the briefing, you will not be deemed to be a part of the evenings club activity.

Float Plan Briefing Sheet ACC6

ALTON CANOE CLUB

Session Venue Bracklesham Bay
Timeframe 18.45 to approx. 20.30

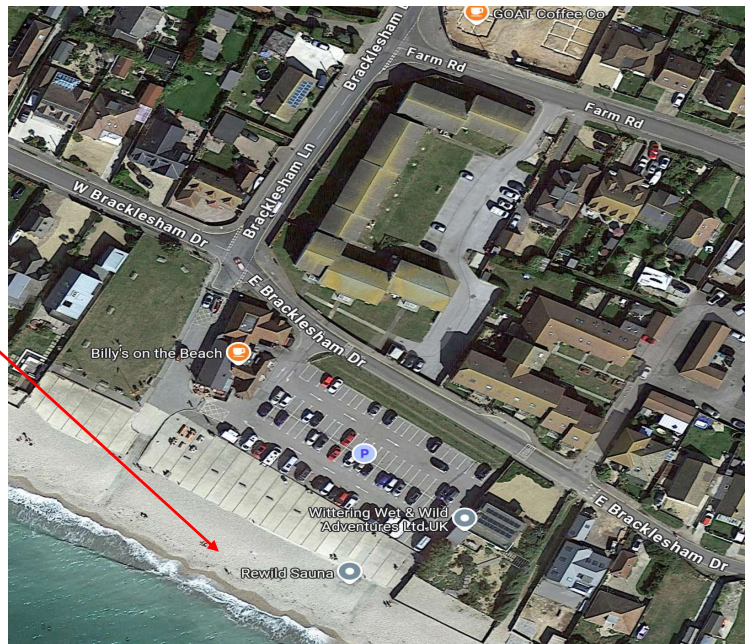


Brief description of the paddling session and its location

"Bracklesham Bay": Bracklesham Bay, Chichester PO20 8JW
What3words: <https://w3w.co/turned.resettle.trials>
Google Maps: <https://maps.app.goo.gl/Es5x4oh23CBMu7Ux9>
Distinguishing feature of location: Parking immediately adjacent to Billy's on the Beach.

Location Map:

Access/Egress Point



Description of session To paddle adjacent to the sea shore, either to the east or the west. The location is subject to tidal flows. The sea state will be affected by wind conditions and strength/direction of tidal flows. Depending upon the surf state, we may remain local to the access/egress point and surf.

Contingency Notes Due to location on the seashore, there is a possibility that this session may be curtailed /cancelled at short notice if the weather conditions are deemed unsuitable. If conditions are considered suitable only for more competent paddlers, a Club Member with insufficient competence may be asked not to join others on the water. Please kindly respect the leader's decision in this regard. Access from the water to the beach is available along the route.

Activity Risks High tide noted on club event calendar (Portsmouth High Water). Tide flows will likely cause paddlers to drift along the shoreline. Wind conditions may also cause paddlers to drift. Wind/tide flow interactions can cause worsened sea state. Possibility of breaking waves onto shelving shingle beach at high tide. Other water users (kayak/paddleboard/jet ski/ yacht/small commercial craft etc).

Notes Please park considerately, do not block pathways/road and be mindful of other members of the public. No permits/licence required. Webcam - "www.surflines.com"

Nearest Hospital (A&E) St Richard's Hospital - 01243788122 Spitalfield Ln, Chichester PO19 6SE

The session will start with a briefing, prior to going afloat. Members must attend the briefing to ensure they know of any location-specific information that they should be aware of. If you do not attend the briefing, you will not be deemed to be a part of the evenings club activity.

Float Plan Briefing Sheet ACC7

ALTON CANOE CLUB

Session Venue Basingstoke Canal, Barley Mow, Winchfield Green
Timeframe 18.45 to approx. 20.30



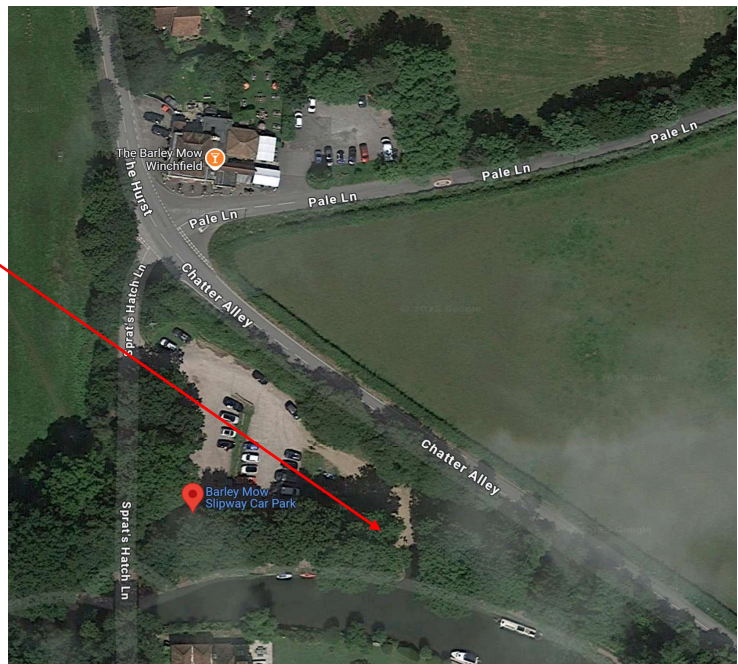
Brief description of the paddling session and its location

"Barley Mow, Winchfield Green";
What3words:
Google Maps:
Distinguishing feature of location:

Barley Mow Slipway Car Park, Sprat's Hatch Ln, Hook RG27 8DD
<https://w3w.co/test.tango.brownish>
<https://maps.app.goo.gl/LmsS1SMESmbzrd1dA>
Passing the Barley Mow PH on your left, turn right into Sprat's Hatch lane and then immediately left into the car park.

Location Map:

Access/Egress Point



Description of session

To paddle a section of the Basingstoke Canal Navigation, either in an easterly or westerly direction.

Contingency Notes

Calm water and no flow would be expected but will be weather/rainfall dependent. The tow path runs adjacent to the canal, generally to the north side. Access from the water to this tow path is available at intervals along the route. Please note, there is a height restriction bar to this car park.

Activity Risks

Reeds and other vegetation along the bank-sides to be avoided. Canal traffic (narrow boats) may be passed. Other water users (kayak/paddleboard etc).

Notes

Please park considerately, do not block pathways/road and be mindful of other members of the public. Basingstoke Canal permit is required for non Paddle UK members (<https://www.hants.gov.uk/thingstodo/basingstokecanal/onthewater/unpowered>). Paddle UK membership allows you access to this stretch of water.

Nearest Hospital (A&E)

Frimley Park Hospital - 0300 6133200

Frimley, Camberley GU16 7UJ

The session will start with a briefing, prior to going afloat. Members must attend the briefing to ensure they know of any location-specific information that they should be aware of. If you do not attend the briefing, you will not be deemed to be a part of the evenings club activity.

Float Plan Briefing Sheet **ACC8**

ALTON CANOE CLUB

Session Venue **Broadmarsh Coastal Park**
Timeframe 18.45 to approx. 20.30



Brief description of the paddling session and its location

"Broadmarsh": Havant PO9 1HS
What3words: <https://w3w.co/early.amber.steer>
Google Maps: <https://maps.app.goo.gl/goAAbNqchPKdRtaG9>
Distinguishing feature of location: Parking immediately adjacent to the slipway.

Location Map:



Access/Egress Point

Budds Farm Sewage Outfall

Description of session To paddle in the northern area of Langstone Harbour. The location is subject to tidal flows. The sea state will be affected by wind conditions and strength/direction of tidal flows.

Contingency Notes Due to location on the seashore, there is a possibility that this session may be curtailed /cancelled at short notice if the weather conditions are deemed unsuitable. If conditions are considered suitable only for more competent paddlers, a Club Member with insufficient competence may be asked not to join others on the water. Please kindly respect the leader's decision in this regard. Access from the water to the shore is available at times, along the route. Please note, there is a height restriction bar to this car park. In the event of a recent or ongoing sewage discharge from the Budds Farm treatment works, the event may be cancelled.

Activity Risks High tide noted on club event calendar (Portsmouth High Water). Tide flows will likely cause paddlers to drift along the shoreline. Wind conditions may cause paddlers to drift. Wind/tide flow interactions can cause worsened sea state. Other water users (kayak/paddleboard/jet ski/ yacht/small commercial craft etc).

Notes Please park considerately, do not block pathways/road and be mindful of other members of the public. Permits are required. (www.conservancy.co.uk).

Nearest Hospital (A&E) Queen Alexandra Hospital - 02392 286000 Cosham, Portsmouth PO6 3LY

The session will start with a briefing, prior to going afloat. Members must attend the briefing to ensure they know of any location-specific information that they should be aware of. If you do not attend the briefing, you will not be deemed to be a part of the evenings club activity.

Float Plan Briefing Sheet ACC9

ALTON CANOE CLUB

Session Venue Pulborough, River Arun
Timeframe 18.45 to approx. 20.30



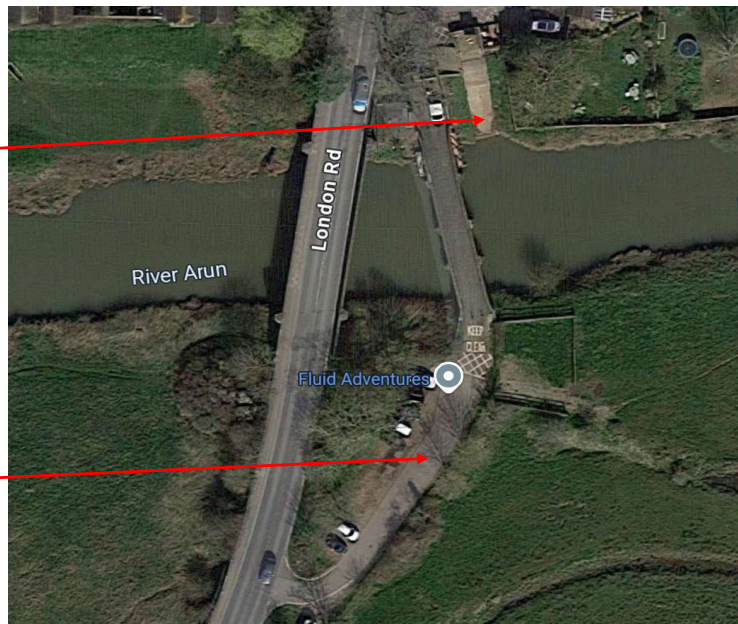
Brief description of the paddling session and its location

"Pulborough": Swan Bridge, Pulborough RH20 2BJ
What3words: <https://w3w.co/radiating.suitcase.nitrate>
Google Maps: <https://maps.app.goo.gl/ievTcYdpdqGjPbEeA>
Distinguishing feature of location: Parking in small car park to the south side of the old river bridge.

Location Map:

Access/Egress Point

Car Parking



Description of session To paddle west (upstream). The location is subject to tidal flows. Depending upon conditions, we may visit a small weir (the river Rother merges with the Arun, approx 1.1km upstream of the start) before continuing up to Stopham Bridge and then returning to the start point. Water state will be affected by wind conditions and strength/direction of tidal flows.

Contingency Notes Due to location on the tidal River Arun, there is a possibility that this session may be curtailed/cancelled at short notice if the weather conditions are deemed unsuitable. If conditions are considered suitable only for more competent paddlers, a Club Member with insufficient competence may be asked not to join others on the water. Please kindly respect the leader's decision in this regard. Access from the water to the shore is available at times, along the route, most notably at Stopham Bridge (what3words - widen.quit.increases)

Activity Risks Tide flows will likely cause paddlers to drift. Wind conditions may cause paddlers to drift. Other water users (kayak/paddleboard etc). The weir (Rother/Arun confluence) has underwater obstructions causing the water to eddy and recirculate. Care must be taken. Steep access / egress slipway.

Notes Please park considerately (limited parking spaces), do not block pathways/road and be mindful of other members of the public. No permits/licence required.

Nearest Hospital (A&E) St Richard's Hospital - 01243788122 Spitalfield Ln, Chichester PO19 6SE

The session will start with a briefing, prior to going afloat. Members must attend the briefing to ensure they know of any location-specific information that they should be aware of. If you do not attend the briefing, you will not be deemed to be a part of the evenings club activity.

Float Plan Briefing Sheet **ACC10**

ALTON CANOE CLUB

Session Venue River Wey, Guildford Viaduct, Guildford

Timeframe 18.45 to approx. 20.30



Brief description of the paddling session and its location

"River Wey, Guildford Viaduct":

What3words:

Google Maps:

Distinguishing feature of location:

Walnut Tree Close Car Park, Woodbridge, Guildford GU1 1BA,

<https://w3w.co/pits.shall.goat>

<https://maps.app.goo.gl/upvRKApjCByErYQr7>

Parking in the Walnut Tree Close car park adjacent to the viaduct. River access/egress from car park. Free parking after 6pm for a small number of cars. If you're unlucky, you may need to drop boats off and then find parking in the local industrial area.

<https://guildford.gov.uk/article/25291/Walnut-Tree-Close>

Location Map:

Access/Egress Point

Car Parking



Description of session

To paddle a section of the River Wey Navigation, south towards Guildford Town Centre. The location is subject to river flow from south to north. We may also explore one of the side channels.

Contingency Notes

Calm water and gentle flows would be expected but will be weather/rainfall dependent. The tow path runs adjacent to the river, generally to the west side. Access from the water to this tow path is available at intervals along the route. Please note, there is a height restriction bar to this car park.

Activity Risks

River flow will move paddlers down river. Potential danger of entrapment in overhanging trees. Difficult access to the river; over-grown bank and high bridge plinth. Other water users (kayak/paddleboard etc).

Notes

Please park considerately, do not block pathways/road and be mindful of other members of the public. River Wey permit is required for non Paddle UK members (<https://www.national-trust-tickets.org.uk/>). Paddle UK membership allows you access to this stretch of water.

Nearest Hospital (A&E)

Royal Surrey County Hospital - 01483571122

Royal Surrey Hospital, Guildford GU2 7XX

The session will start with a briefing, prior to going afloat. Members must attend the briefing to ensure they know of any location-specific information that they should be aware of. If you do not attend the briefing, you will not be deemed to be a part of the evenings club activity.

Float Plan Briefing Sheet ACC11

ALTON CANOE CLUB

Session Venue The Ship Inn, Hayling Island Bridge

Timeframe 18.45 to approx. 20.30



Brief description of the paddling session and its location

"Hayling Island Bridge":

Ship Inn, Langstone Rd, Langstone, Havant PO9 1RD

What3words:

<https://w3w.co/storms.chemistry.runs>

Google Maps:

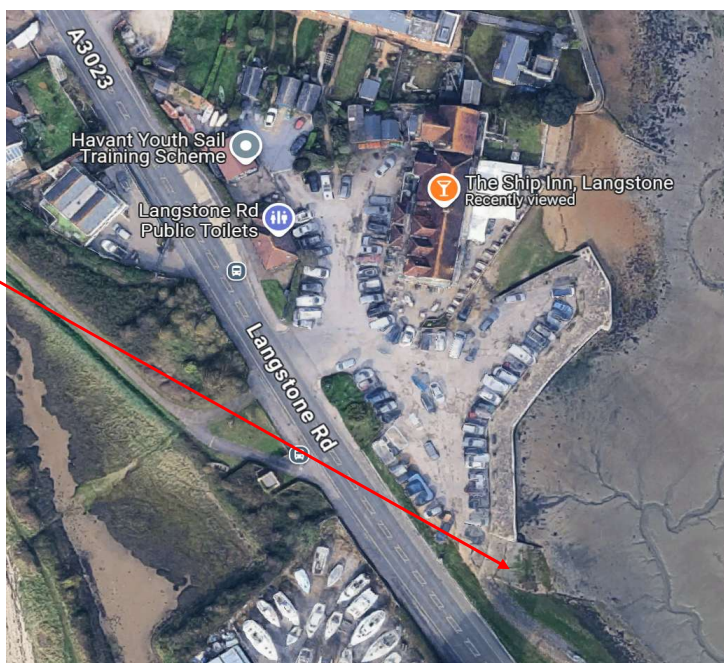
<https://maps.app.goo.gl/VtoBm1LmhVpo4Cjh8>

Distinguishing feature of location:

Parking immediately adjacent to the slipway.

Location Map:

Access/Egress Point



Description of session

To paddle in the northern area of Langstone or Chichester Harbours. The location is subject to tidal flows. The sea state will be affected by wind conditions and strength/direction of tidal flows.

Contingency Notes

Due to location on the seashore, there is a possibility that this session may be curtailed /cancelled at short notice if the weather conditions are deemed unsuitable. If conditions are considered suitable only for more competent paddlers, a Club Member with insufficient competence may be asked not to join others on the water. Please kindly respect the leader's decision in this regard. Access from the water to the shore is available at times, along the route.

Activity Risks

High tide noted on club event calendar (Portsmouth High Water). Tide flows will likely cause paddlers to drift along the shoreline. Wind conditions may cause paddlers to drift. Wind/tide flow interactions can cause worsened sea state. Other water users (kayak/paddleboard/jet ski/ yacht/small commercial craft etc). Slippery access slipway.

Notes

Please park considerately, do not block pathways/road and be mindful of other members of the public. Permits are required. (www.conservancy.co.uk).

Nearest Hospital (A&E)

Queen Alexandra Hospital - 02392 286000

Cosham, Portsmouth PO6 3LY

The session will start with a briefing, prior to going afloat. Members must attend the briefing to ensure they know of any location-specific information that they should be aware of. If you do not attend the briefing, you will not be deemed to be a part of the evenings club activity.

Float Plan Briefing Sheet **ACC12**

ALTON CANOE CLUB

Session Venue Basingstoke Canal, Crookham Wharf
Timeframe 18.45 to approx. 20.30



Brief description of the paddling session and its location

"Crookham Wharf";

What3words:

Google Maps:

Distinguishing feature of location:

Crookham Wharf Car Park, Crookham Village, Fleet GU51 5SZ

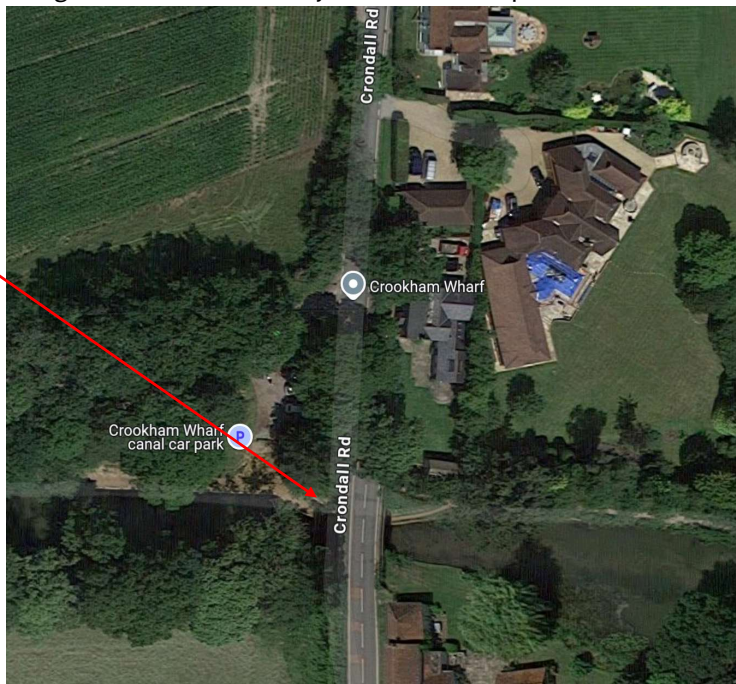
<https://w3w.co/commended.reeling.projects>

<https://maps.app.goo.gl/7geg3dy9esbiiQrG8>

Travelling North on Crondall Road, pass over the canal road bridge and turn immediately left into the car park.

Location Map:

Access/Egress Point



Description of session

To paddle a section of the Basingstoke Canal Navigation, either in an easterly or westerly direction.

Contingency Notes

Calm water and no flow would be expected but will be weather/rainfall dependent. The tow path runs adjacent to the canal, generally to the north side. Access from the water to this tow path is available at intervals along the route.

Activity Risks

Reeds and other vegetation along the bank-sides to be avoided. Canal traffic (narrow boats) may be passed. Other water users (kayak/paddleboard etc).

Notes

Please park considerately, do not block pathways/road and be mindful of other members of the public. Basingstoke Canal permit is required for non Paddle UK members (<https://www.hants.gov.uk/thingstodo/basingstokecanal/onthewater/unpowered>). Paddle UK membership allows you access to this stretch of water.

Nearest Hospital (A&E)

Frimley Park Hospital - 0300 6133200

Frimley, Camberley GU16 7UJ

The session will start with a briefing, prior to going afloat. Members must attend the briefing to ensure they know of any location-specific information that they should be aware of. If you do not attend the briefing, you will not be deemed to be a part of the evenings club activity.

Float Plan Briefing Sheet ACC13

ALTON CANOE CLUB



Session Venue West Itchenor
Timeframe 18.45 to approx. 20.30

Brief description of the paddling session and its location

"West Itchenor": The Street, Itchenor, Chichester PO20 7AW
What3words: <https://w3w.co/imprints.myths.puns>
Google Maps: <https://maps.app.goo.gl/ztqr5DHn6atbra1Z8>
Distinguishing feature of location: Parking immediately adjacent to the slipway. Alternative pay and display parking just prior to the Ship Inn PH.

Location Map:

Access/Egress Point

Car Parking



Description of session To paddle in the northern area of Langstone or Chichester Harbours. The location is subject to tidal flows. The sea state will be affected by wind conditions and strength/direction of tidal flows.

Contingency Notes Due to location on the seashore, there is a possibility that this session may be curtailed /cancelled at short notice if the weather conditions are deemed unsuitable. If conditions are considered suitable only for more competent paddlers, a Club Member with insufficient competence may be asked not to join others on the water. Please kindly respect the leader's decision in this regard. Access from the water to the shore is available at times, along the route.

Activity Risks High tide noted on club event calendar (Portsmouth High Water). Tide flows will likely cause paddlers to drift along the shoreline. Wind conditions may cause paddlers to drift. Wind/tide flow interactions can cause worsened sea state. Moored craft/mooring lines to avoid. Other water users (kayak/paddleboard/jet ski/ yacht/small commercial craft etc).

Notes Please park considerately, do not block pathways/road and be mindful of other members of the public. Permits are required. (www.conservancy.co.uk).

Nearest Hospital (A&E) Queen Alexandra Hospital - 02392 286000 Cosham, Portsmouth PO6 3LY

The session will start with a briefing, prior to going afloat. Members must attend the briefing to ensure they know of any location-specific information that they should be aware of. If you do not attend the briefing, you will not be deemed to be a part of the evenings club activity.

Float Plan Briefing Sheet ACC14

ALTON CANOE CLUB

Session Venue Basingstoke Canal, Ash Vale

Timeframe 18.45 to approx. 20.30



Brief description of the paddling session and its location

"Ash Vale";

What3words:

Google Maps:

Distinguishing feature of location:

Station Approach, Ash Vale, Aldershot GU12 5LR

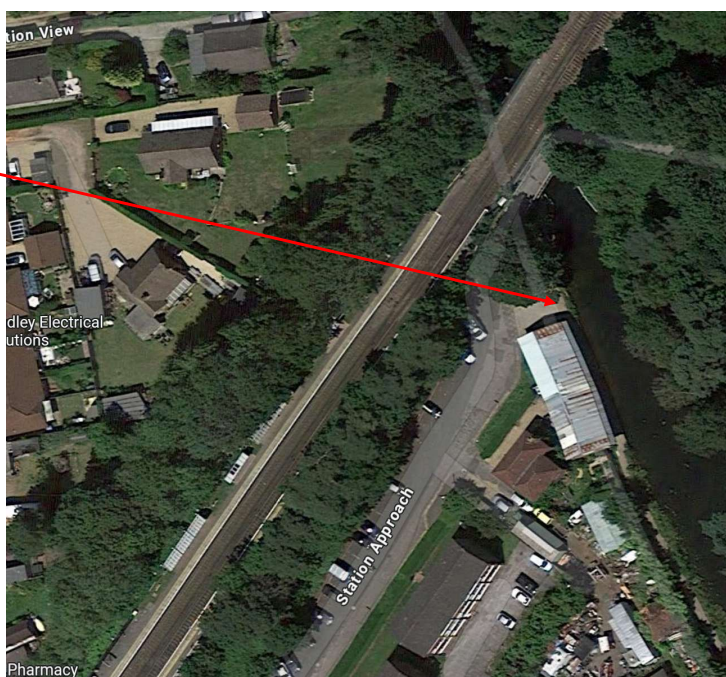
<https://w3w.co/venues.vibe.start>

<https://maps.app.goo.gl/gZWnMMD3yc4Tm3kUA>

Turn off Vale Road and drive up through car park to the far end. Access to canal from extreme end of the car park.

Location Map:

Access/Egress Point



Description of session

To paddle a section of the Basingstoke Canal Navigation, either in an easterly or westerly direction.

Contingency Notes

Calm water and no flow would be expected but will be weather/rainfall dependent. The tow path runs adjacent to the canal, generally to the west side. Access from the water to this tow path is available at intervals along the route.

Activity Risks

Reeds and other vegetation along the bank-sides to be avoided. Canal traffic (narrow boats) may be passed. Other water users (kayak/paddleboard etc).

Notes

Please park considerately, do not block pathways/road and be mindful of other members of the public. Basingstoke Canal permit is required for non Paddle UK members (<https://www.hants.gov.uk/things/todo/basingstokecanal/onthewater/unpowered>). Paddle UK membership allows you access to this stretch of water.

Nearest Hospital (A&E)

Frimley Park Hospital - 0300 6133200

Frimley, Camberley GU16 7UJ

The session will start with a briefing, prior to going afloat. Members must attend the briefing to ensure they know of any location-specific information that they should be aware of. If you do not attend the briefing, you will not be deemed to be a part of the evenings club activity.

Float Plan Briefing Sheet ACC15

ALTON CANOE CLUB



Session Venue Chichester Canal, Chichester
Timeframe 18.45 to approx. 20.30

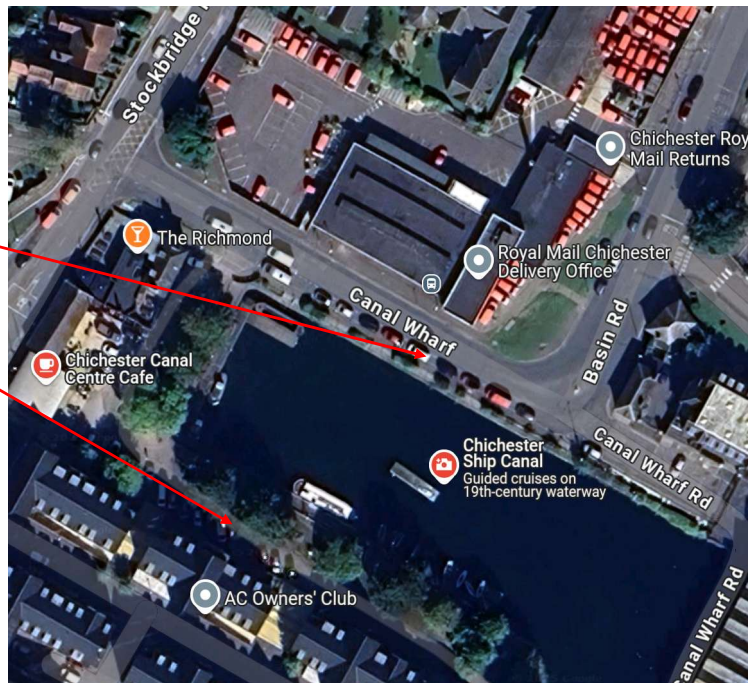
Brief description of the paddling session and its location

"Chichester Canal";
What3words: <https://w3w.co/logo.guilty.grew>
Google Maps: <https://maps.app.goo.gl/PxZcV3avb8Ti4XC49>
Distinguishing feature of location: Linear parking adjacent to the north side of the basin. Walk kayaks around to the put-in on the south side. Limited parking.

Location Map:

Car Parking

Access/Egress Point



Description of session To paddle a section of the Chichester Canal Navigation.

Contingency Notes Calm water and no flow would be expected but will be weather/rainfall dependent. The tow path runs adjacent to the canal, generally to the west side. Access from the water to this tow path is available at intervals along the route.

Activity Risks Reeds and other vegetation along the bank-sides to be avoided. Canal traffic (narrow boats) may be passed. Other water users (kayak/paddleboard etc).

Notes Please park considerately, do not block pathways/road and be mindful of other members of the public. Chichester Canal permit is required for non Paddle UK members (<https://chichestercanal.org.uk/>). Paddle UK membership allows you access to this stretch of water.

Nearest Hospital (A&E) St Richard's Hospital - 01243788122 Spitalfield Ln, Chichester PO19 6SE

The session will start with a briefing, prior to going afloat. Members must attend the briefing to ensure they know of any location-specific information that they should be aware of. If you do not attend the briefing, you will not be deemed to be a part of the evenings club activity.

Float Plan Briefing Sheet ACC16

ALTON CANOE CLUB

Session Venue Stopham Bridge, River Arun
Timeframe 18.45 to approx. 20.30



Brief description of the paddling session and its location

"Stopham, River Arun": Stopham Rd, Pulborough RH20 1DS
What3words: <https://w3w.co/novelists.nearly.reckons>
Google Maps: <https://maps.app.goo.gl/YsjD3ubV2yJy8f6f6>
Distinguishing feature of location: Minimal Parking in small car park to the east side of the new river bridge. Additional parking adjacent to the White Hart PH.

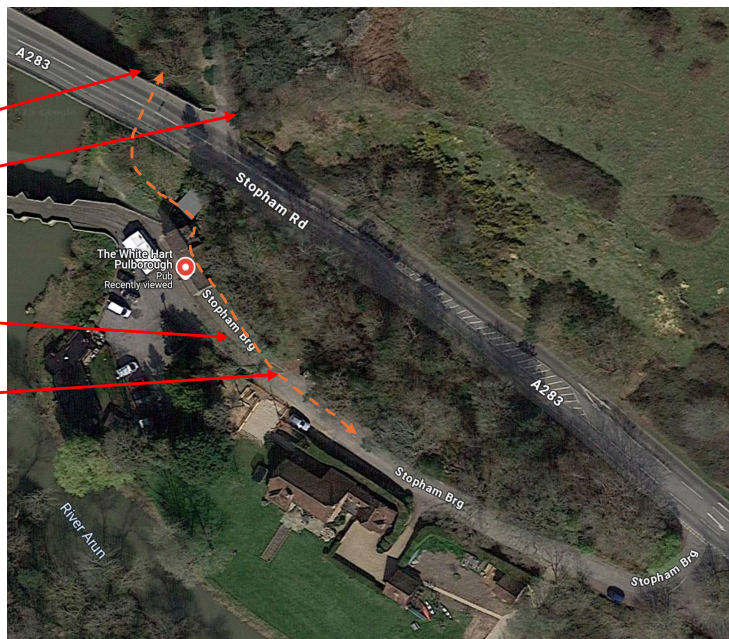
Location Map:

Access/Egress Point

Car Park#1

Car Park#2

Carrying Route from car park#2



Description of session To paddle north (upstream). The location is subject to tidal flows. Paddle as far upstream as the river depth/time allows and then returning to the start point. Water state will be affected by wind conditions and strength/direction of tidal flows.

Contingency Notes Due to location on the tidal River Arun, there is a possibility that this session may be curtailed/cancelled at short notice if the weather conditions are deemed unsuitable. If conditions are considered suitable only for more competent paddlers, a Club Member with insufficient competence may be asked not to join others on the water. Please kindly respect the leader's decision in this regard. Access from the water to the shore is available at intervals, along the route.

Activity Risks Tide flows will likely cause paddlers to drift. Wind conditions may cause paddlers to drift. Other water users (kayak/paddleboard etc). Reeds and other vegetation along the bank-sides to be avoided.

Notes Please park considerately (very limited parking spaces at Car Park #1), do not block pathways /road and be mindful of other members of the public. No permits/licence required. The A283 is a fast and dangerous road. Difficult access to the river beneath road bridge.

Nearest Hospital (A&E) St Richard's Hospital - 01243788122 Spitalfield Ln, Chichester PO19 6SE

The session will start with a briefing, prior to going afloat. Members must attend the briefing to ensure they know of any location-specific information that they should be aware of. If you do not attend the briefing, you will not be deemed to be a part of the evenings club activity.

Float Plan Briefing Sheet ACC17

ALTON CANOE CLUB

Session Venue River Wey, Farncombe
Timeframe 18.45 to approx. 20.30



Brief description of the paddling session and its location

"River Wey, Farncombe": Catteshall Rd, Godalming GU7 1NH
What3words: <https://w3w.co/young.call.shirts>
Google Maps: <https://maps.app.goo.gl/SDc4SsfCYRQtEov8>
Distinguishing feature of location: Linear parking along Catteshall Road with access via a gate onto tow path.

Location Map:

Access/Egress Point

Car Parking



Description of session To paddle a section of the River Wey Navigation, north east towards St Catherines lock. The location is subject to river flow from south to north. We may also explore one of the side channels.

Contingency Notes Calm water and gentle flows would be expected but will be weather/rainfall dependent. The tow path runs adjacent to the river, generally to the west side. Access from the water to this tow path is available at intervals along the route.

Activity Risks River flow will move paddlers down river. Potential danger of entrapment in overhanging trees. River locks have adjacent over-flow streams/wiers and should be avoided. Other water users (kayak/paddleboard etc). Lock(s) to be portaged

Notes Parking is very limited. Dangerous road. Please park considerately, do not block pathways /road and be mindful of other members of the public. River Wey permit is required for non Paddle UK members (<https://www.national-trust-tickets.org.uk/>). Paddle UK membership allows you access to this stretch of water.

Nearest Hospital (A&E) Royal Surrey County Hospital - 01483571122 Royal Surrey Hospital, Guildford GU2 7XX

The session will start with a briefing, prior to going afloat. Members must attend the briefing to ensure they know of any location-specific information that they should be aware of. If you do not attend the briefing, you will not be deemed to be a part of the evenings club activity.

Float Plan Briefing Sheet ACC18

ALTON CANOE CLUB

Session Venue City of Portsmouth. Round Tower.
Timeframe 18.45 to approx. 20.30



Brief description of the paddling session and its location

"Round Tower": Point Battery, Broad St, Portsmouth PO1 2FS
What3words: <https://w3w.co/stuck.yappy.punch>
Google Maps: <https://maps.app.goo.gl/QSietGUvhtij1HJt8>
Distinguishing feature of location: Parking immediately behind the city wall; on-street parking.
RingGo app is recommended (<https://myringgo.co.uk/>)

Location Map:

Access/Egress Point



Description of session To paddle to the east of the access/egress point. The location is subject to strong tidal flows in/out of the harbour entrance. The sea state will be affected by wind conditions and strength/direction of tidal flows. The out and back paddle will be parallel to the foreshore. The shoreline is a mix of beach, high rocky sea defences and sea wall.

Contingency Notes Due to its location on the seashore / entrance to Portsmouth Harbour, there is a possibility that this session may be curtailed/cancelled at short notice if the weather conditions are deemed unsuitable. Access from the water to the shore is available at times, along the route. If conditions are considered suitable only for more competent paddlers, a Club Member with insufficient competence may be asked not to join others on the water. Please kindly respect the leader's decision in this regard.

Activity Risks High tide noted on club event calendar (Portsmouth High Water). Tide flows will likely cause paddlers to drift along the foreshore. Wind conditions may cause paddlers to drift. Wind/tide flow interactions can cause worsened sea state. Other water users (kayak/paddleboard/jet ski/ yacht/small commercial craft etc). **NOTE: Busy shipping lane is Immediately adjacent to the access/egress point. Pay close attention to the leader's instructions. Under no circumstances should you go afloat until invited to do so.**

Notes Please park considerately, do not block pathways/road and be mindful of other members of the public.

Nearest Hospital (A&E) Queen Alexandra Hospital - 02392 286000 Cosham, Portsmouth PO6 3LY

The session will start with a briefing, prior to going afloat. Members must attend the briefing to ensure they know of any location-specific information that they should be aware of. If you do not attend the briefing, you will not be deemed to be a part of the evenings club activity.